

Short Installation Guide

20x Zoom HD/SD-SDI-HDMI H.265

IP Streaming Box Camera

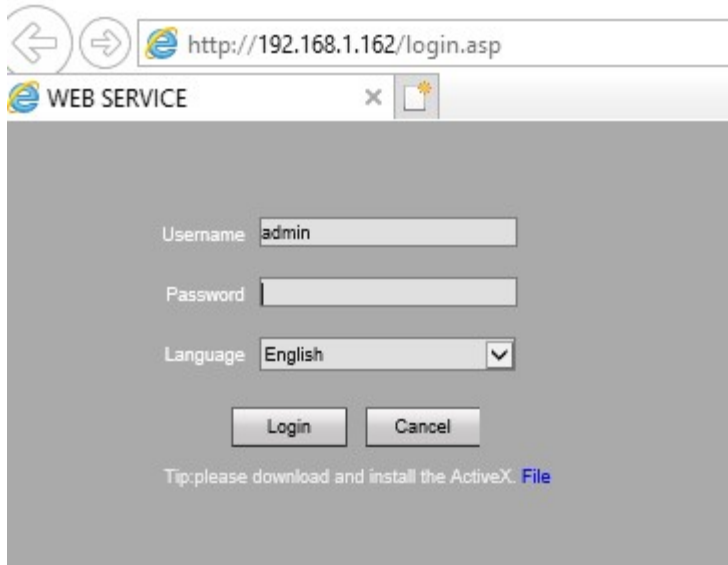
Up to 1080p

Maximus H.265 Pro

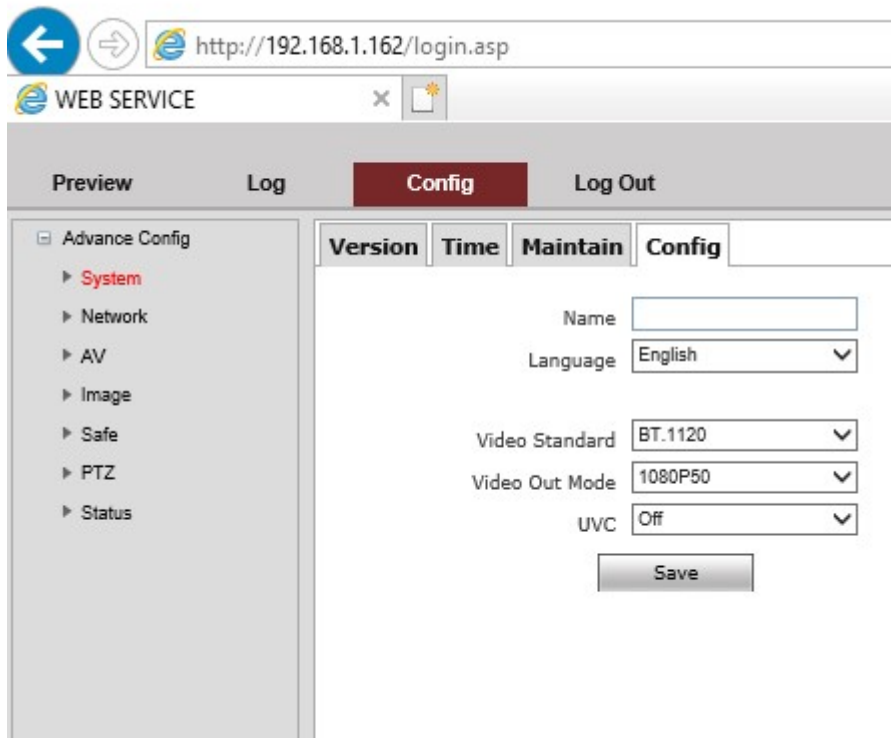


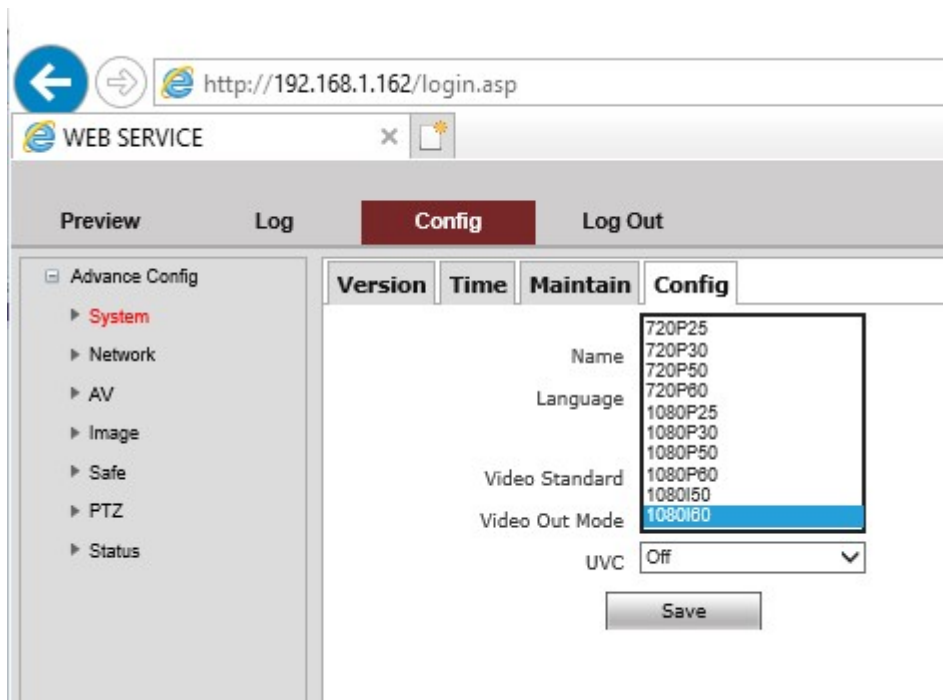
1. Plug in Camera's Power Supply
2. Plug in an HDMI or SDI to a monitor (if needed, can also see and control the device through the web interface)
3. Plug in Ethernet (NMS/DATA) port either directly to your computer or to a network switch.
4. Use Internet Explorer (other web browsers can access/change settings but only Internet Explorer will allow you to see the video coming out of the camera live) to browse to the IP Address of the Camera 192.168.1.162
5. Install the ActiveX link under the password field. The link should be in blue and say "File". This will allow you to view the footage streaming out of the Camera.

6. Username : admin Password: admin



7. You can change settings be either holding down the “Five-Direction Button” on the back of the camera or logging into the web interface and clicking the “Config” tab at the top of the interface and clicking of “System” and then “Config” for your Video Out resolution settings. (First Depiction is setting up video out resolution options for the web interface)





(The Second Depiction is demonstrating setting the video out resolution from the device Five-Direction Button found on the back of the camera)

MAIN MENU

EXPOSURE
COLOR
PICTURE
P/T/Z
NOISE REDUCE
-VIDEO OUT
SYSTEM SETUP
DEFAULT SETUP
EXIT

VIDEO OUT

VIDEO OUT: 1080P50
REBOOT
DIGITAL AUDIO: ON
-BACK
EXIT