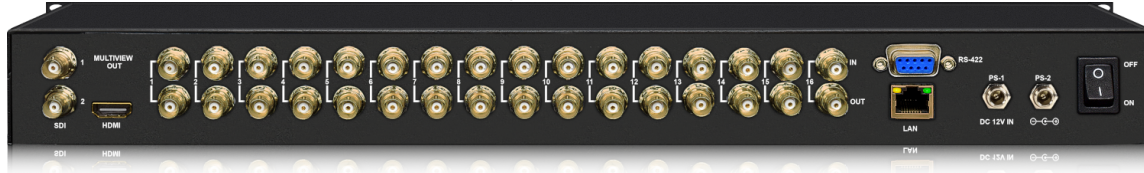




Professional SDI matrix switcher and multiviewer with QR code linked to the live product page.



Front panel view with LCD, routing controls, dedicated function buttons, and control knob.



Rear panel view with 16 SDI inputs, 16 SDI outputs, multiview outputs, LAN, RS-422, and redundant power.

## Model Number

H-16x16SDI-MW-SW

**Manufacturer:** Thor Broadcast

**Product Overview:** The Thor Broadcast 16x16 SDI Switcher and Multiviewer is a compact 1RU platform that combines a full 16x16 SDI matrix switcher with a powerful built-in multiviewer. It accepts up to sixteen SD/HD/3G-SDI sources and routes them in any desired arrangement while automatically detecting mixed input formats, including SD, HD, 3G-SDI and DVB-ASI. In multiviewer mode, all sixteen SDI inputs can be monitored simultaneously on a single HDMI or SDI display, making the unit ideal for control rooms, live production, AV routing, and monitoring applications. The system supports front-panel control, LAN software control, RS-422 software control, and USB keyboard operation, and it includes redundant power inputs for mission-critical reliability.

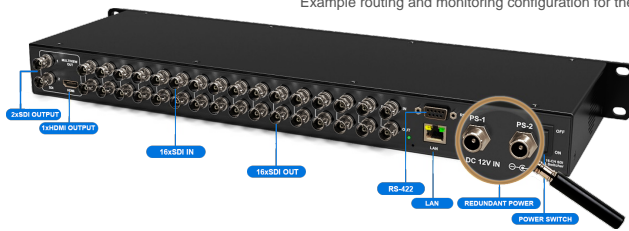
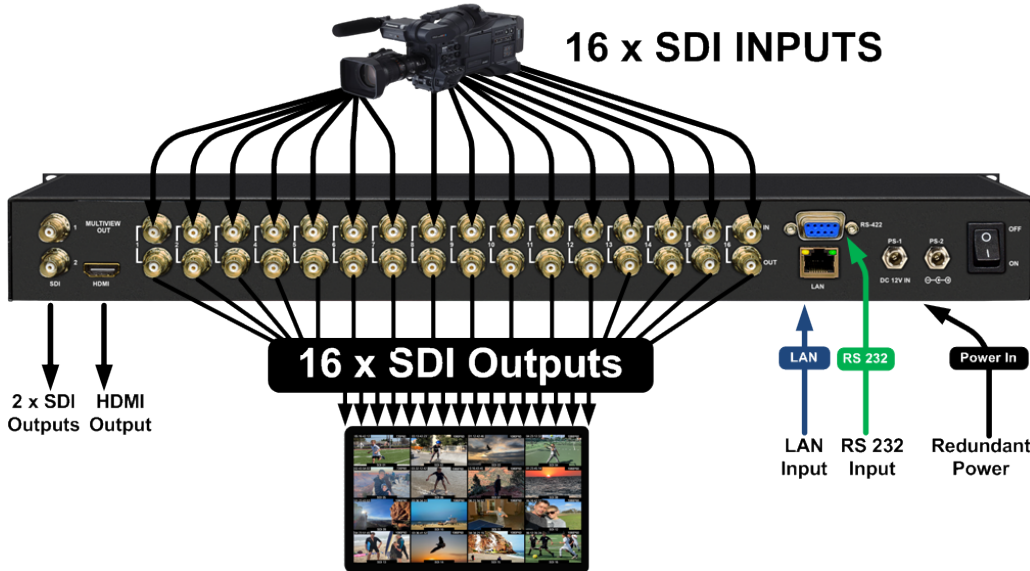
## Key Specifications

Specification Category	Extracted Value
Model Number	H-16x16SDI-MW-SW
Product Type	16x16 3G SDI HD/SD-SDI Matrix Switcher and Multiviewer
Switcher Inputs	16 x SD/HD/3G-SDI / DVB-ASI
Switcher Outputs	16 x SD/HD/3G-SDI / DVB-ASI
Multiviewer Inputs	16 x SD/HD/3G-SDI
Multiviewer Loop Outputs	16 x SD/HD/3G-SDI
Multiviewer Outputs	2 x SDI, 1 x HDMI
Control Interfaces	Front panel buttons and knob, LAN software control and update, RS-422 software control, USB keyboard
Power Inputs	PS-1 and PS-2 redundant power inputs
Voltage Range	DC 12V to 20V
Power Consumption	36W
Operating Temperature	0°C to 60°C
Storage Temperature	-30°C to 70°C
Humidity	0% to 90%, non-condensing
Mechanical	Standard 19-inch 1RU rackmount, weight 2 kg
Included Accessories	H-16x16SDI-MW-SW multiviewer/switcher and DC 12V 5A power adapter
Warranty	2-year limited warranty

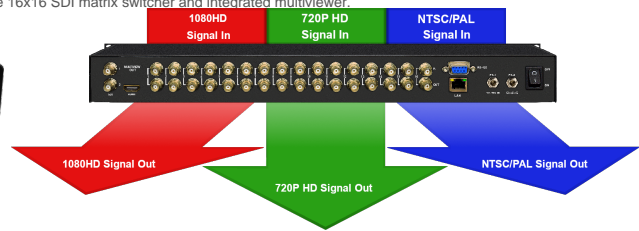
## Core Features

- 16 x 3G-SDI inputs and 16 x 3G-SDI outputs in switcher mode.
- Integrated multiviewer with 16 SDI inputs, 16 loop outputs, 2 SDI outputs, and 1 HDMI output.
- Automatic input format detection and equalization for SD, HD, and 3G-SDI.
- Supports level A and level B signals.
- Compatible with DVB-ASI in switcher mode.
- Passes ancillary data and embedded audio.
- Front panel button and knob control.
- Free PC software control over LAN and RS-422.
- USB keyboard control support.
- Mini front-panel LCD display for quick local monitoring.
- Redundant power input design for critical applications.
- Standard 19-inch 1RU form factor for easy rack integration.

# 16x16 3G SDI Matrix Switcher



Labeled rear-angle hardware view showing I/O and redundant power.



Mixed-format switching concept across 1080HD, 720P HD, and NTSC/PAL signals.

## Switcher Mode Technical Details

Switcher Mode	Details
Inputs	SD/HD/3G-SDI / DVB-ASI x16
Outputs	SD/HD/3G-SDI / DVB-ASI x16
Format Support	2048x1080p 30/29.97/25/24/23.98; 2048x1080PsF 30/29.97/25/24/23.98; 1920x1080p 60/59.94/50/30/29.97/25/24/23.98; 1920x1080PsF 30/29.97/25/24/23.98; 1920x1080i 60/59.94/50; 1280x720p 60/59.94/50/30/29.97/25/24/23.98; 625i 50 PAL; 525i 59.94 NTSC
Auto Switching	Automatically selects SD, HD, and 3G-SDI on input
Video Rate	SD/HD/3G-SDI
Compliance	SMPTE 259M, 292M, 296M, 352M, 372M, 424M, 425M, DVB-ASI
Color Space / Precision	YUV 4:2:2, YUV 4:4:4, RGB 4:4:4, XYZ 4:4:4

## Multiviewer Mode Technical Details

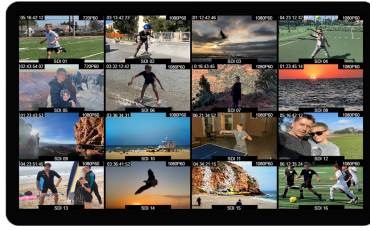
Multiviewer Mode	Details
Inputs	SD/HD/3G-SDI x16
Loop Outputs	SD/HD/3G-SDI x16
Outputs	SDI x2, HDMI x1
Input Format Support	1920x1080p 60/59.94/50/30/29.97/25/24/23.98; 1920x1080PsF 30/29.97/25/24/23.98; 1920x1080i 60/59.94/50; 1280x720p 60/59.94/50/30/29.97/25/24/23.98; 625i 50 PAL; 525i 59.94 NTSC
Output Format Support	1080p 60/50/30/25/24; 1080i 60/50; 720p 60/50
Auto Switching	Automatically selects SD, HD, and 3G-SDI on input
Video Rate	SD/HD/3G-SDI
Compliance	SMPTE 259M, 292M, 296M, 372M, 424M
Color Space / Precision	YUV 4:2:2, YUV 4:4:4, RGB 4:4:4 on SDI input; YUV 4:2:2 on multiview HDMI/SDI output

# Multiviewer Functions and Overlays

## 16 Channel Multiviewer

H-16x16SDI-MW-SW is default as a 16-CH multiviewer, and it is perfect for large installations because all 16 independent 3G-SDI inputs signals output as a multiview signal with audio, then you only need a single display to monitor all input signals simultaneously.

The Video format of multiview output can be selected from total 9 formats from 720p to 1080p. Besides, 20 standard layouts with 16/12/11/10/9/8/6/4 preset in this device. You can even SOLO any input signal in full screen through the shortcut key



16-channel multiviewer example with multiple simultaneous SDI sources displayed on a single screen.

## Overlays

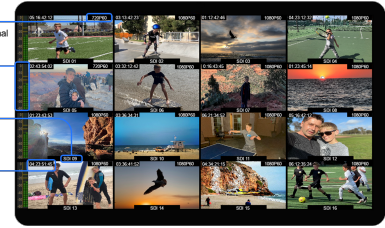
Each window is a completely independent video monitor with overlays that you can turn on and off. For example, signal status, audio meters, UMD and time code.

**Signal Status** ← Signal Status overlay conveniently displays the SDI input signal status of each window

**Audio Meter** ← Each Window has a 2-channel audio meter overlay for monitoring the audio status, and you can choose 2 out of 16-channel embedded audio from SDI input signal.

**UMD Overlay** ← In each individual window, user can create custom UMD overlays up to 11 characters to indicate and mark the signal source information.

**Time Code** ← Each window displays an independent time code of SDI input signal.



Overlay functions for signal status, audio meter, UMD, and time code on each monitored window.

## Multiviewer Highlights

- All 16 independent 3G-SDI input signals can be monitored simultaneously on the multiview output with audio.
- The multiview output format can be selected from multiple formats between 720p and 1080p.
- Multiple preset layouts are available for 16 / 12 / 11 / 10 / 9 / 8 / 6 / 4 window monitoring.
- Any input can be displayed solo in full screen using shortcut control.
- Per-window overlays can show signal status, audio meters, UMD, and time code.
- Each window operates as an independent monitor with flexible overlay control.

## Application Summary

Recommended Applications	Benefits
Broadcast control rooms	Centralized routing plus multiview monitoring of many live sources on one display.
Live production and OB workflows	Quick source switching, format flexibility, and compact 1RU integration.
Studios and post facilities	Flexible SDI patching with monitoring overlays and multiple control methods.
Houses of worship and event venues	Simple routing of cameras and playback sources with built-in monitoring.
Security and operations monitoring	Multi-window monitoring helps visualize numerous video feeds at once.

## Product Link and Support

Use the QR code on the first page to open the live product page for current documentation, manuals, and application details. For sales and support, contact Thor Broadcast at [sales@thorbroadcast.com](mailto:sales@thorbroadcast.com) or call **800-521-8467**.