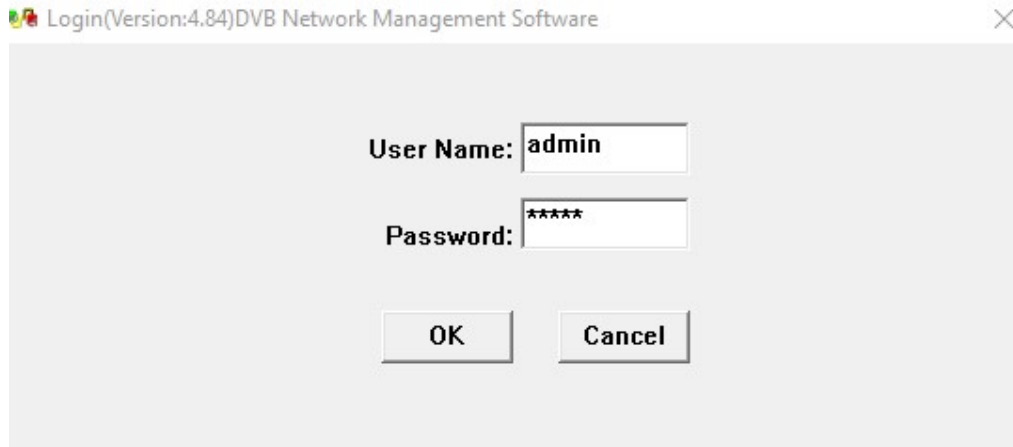


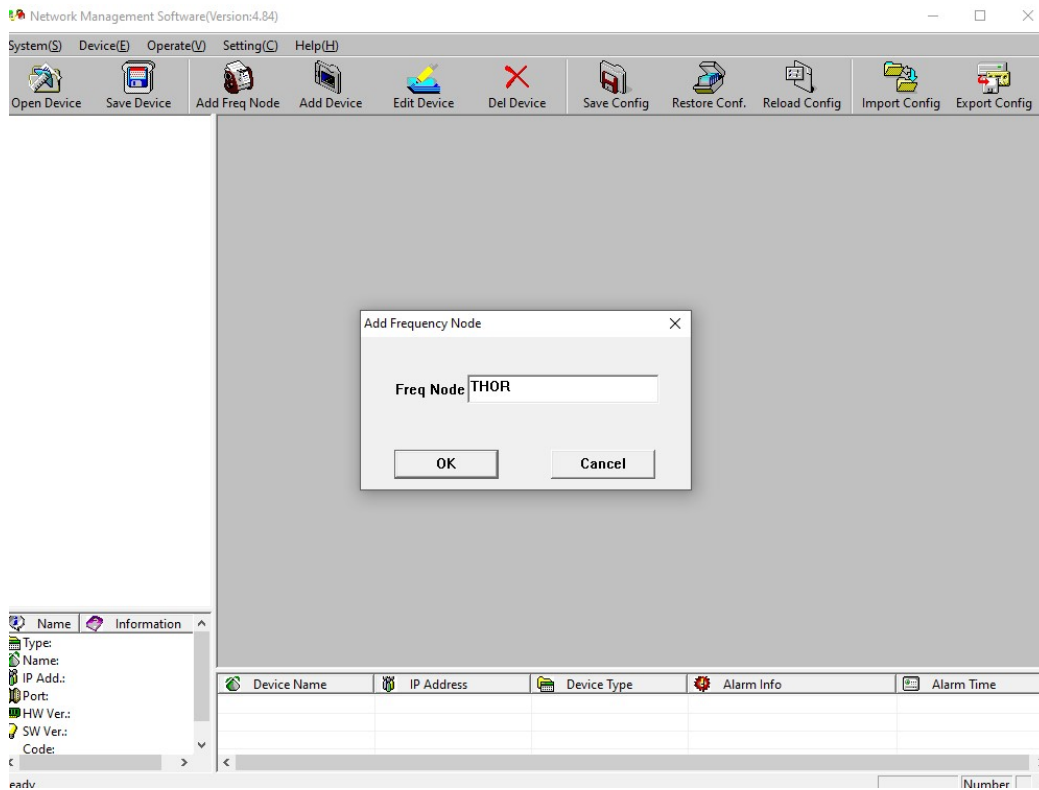
ASI Point to Point setup Example

Install NMS Software “NMS_EN4.84”

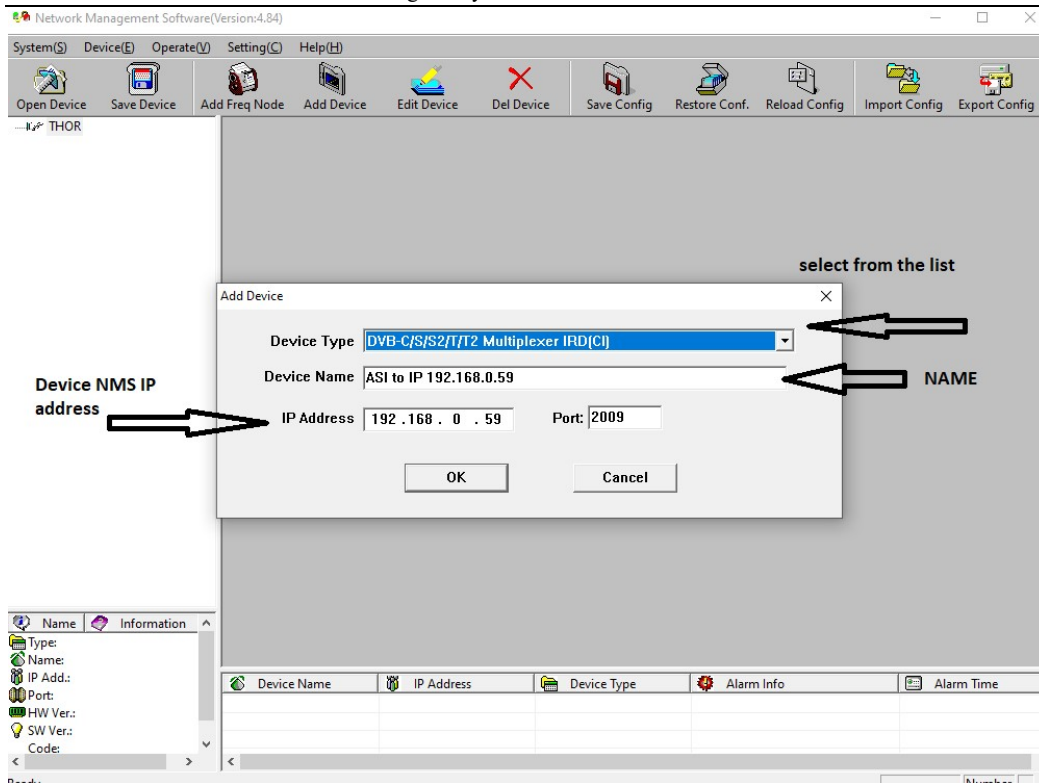
Login: admin/ admin



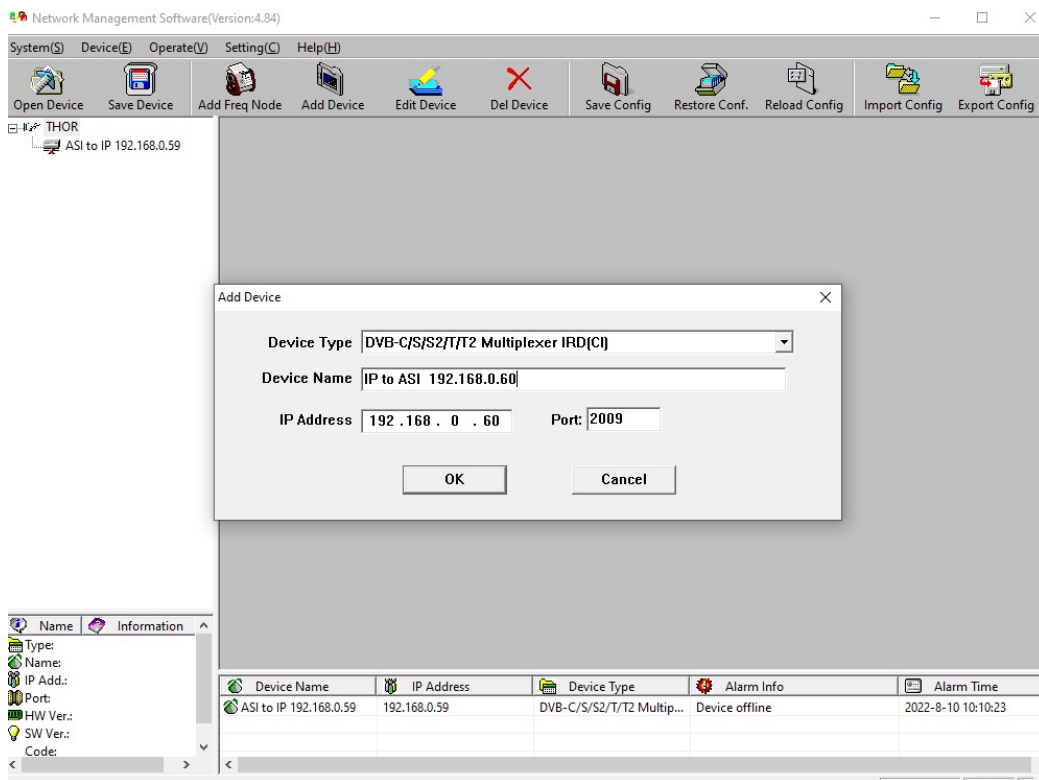
Add Freq Node Name



Thor H-ASI-IP-B ASI to IP and IP to ASI gateway

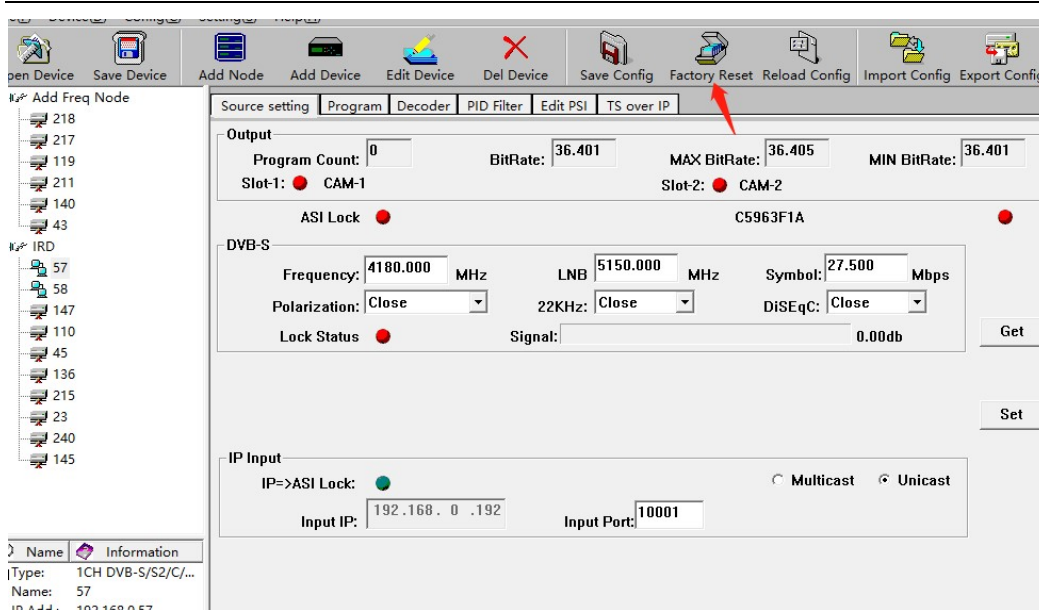


Add the second device

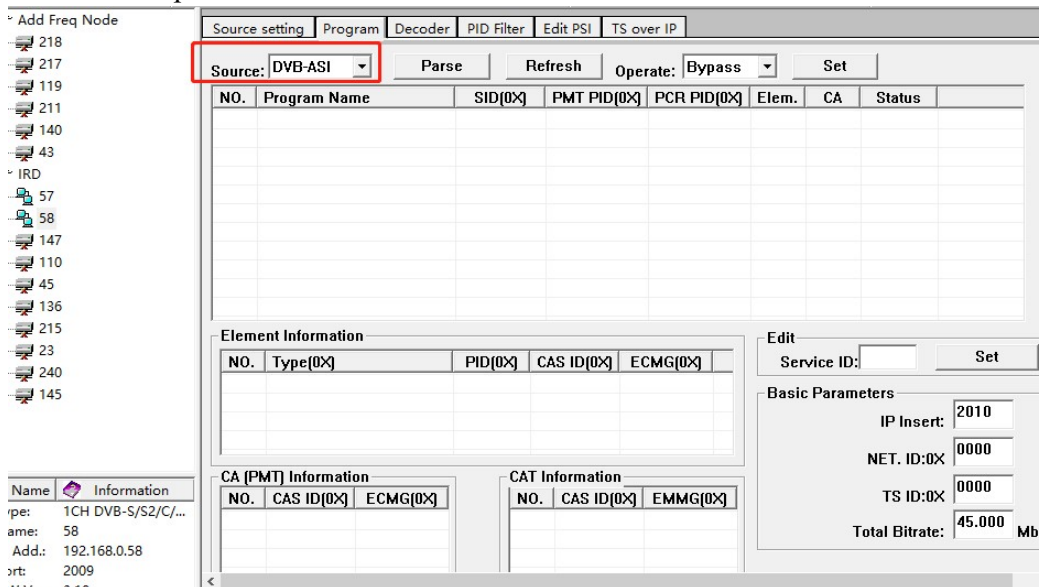


1>default setting all decoder

Thor H-ASI-IP-B ASI to IP and IP to ASI gateway

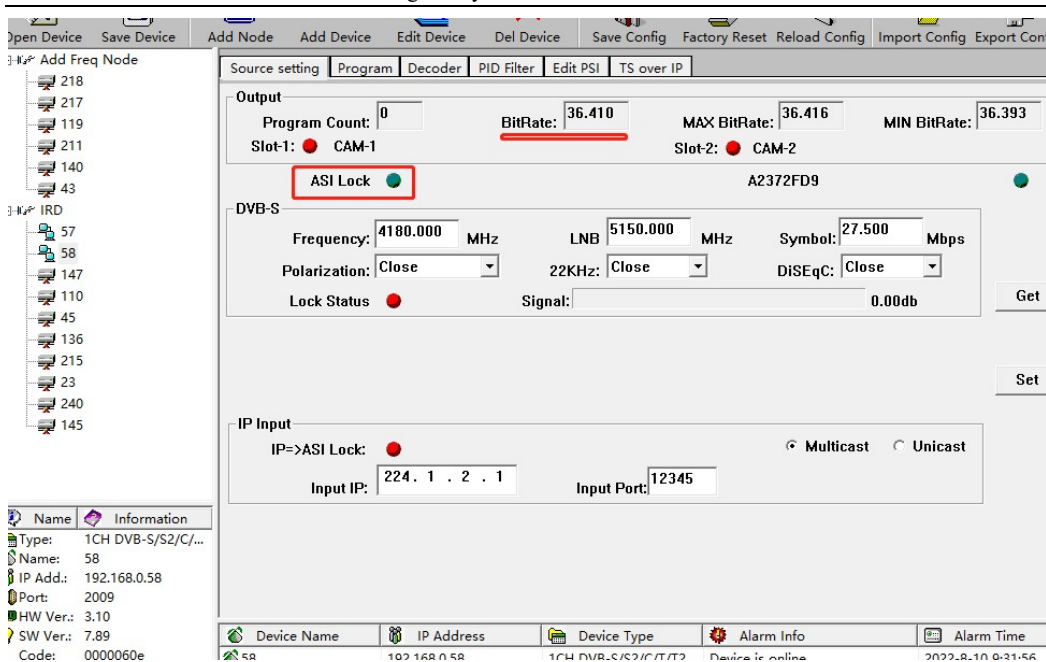


2>set "asi to ip":

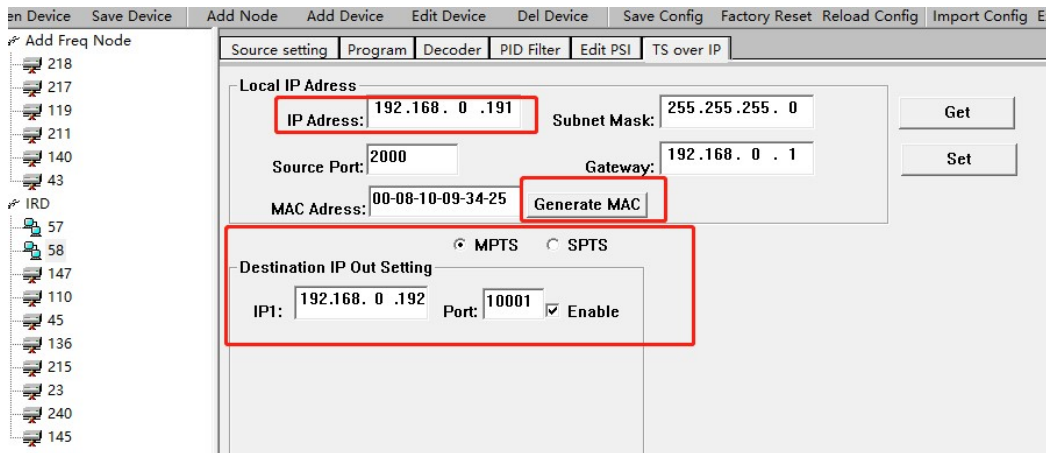


Select "DVB-ASI" AS input signal

Thor H-ASI-IP-B ASI to IP and IP to ASI gateway



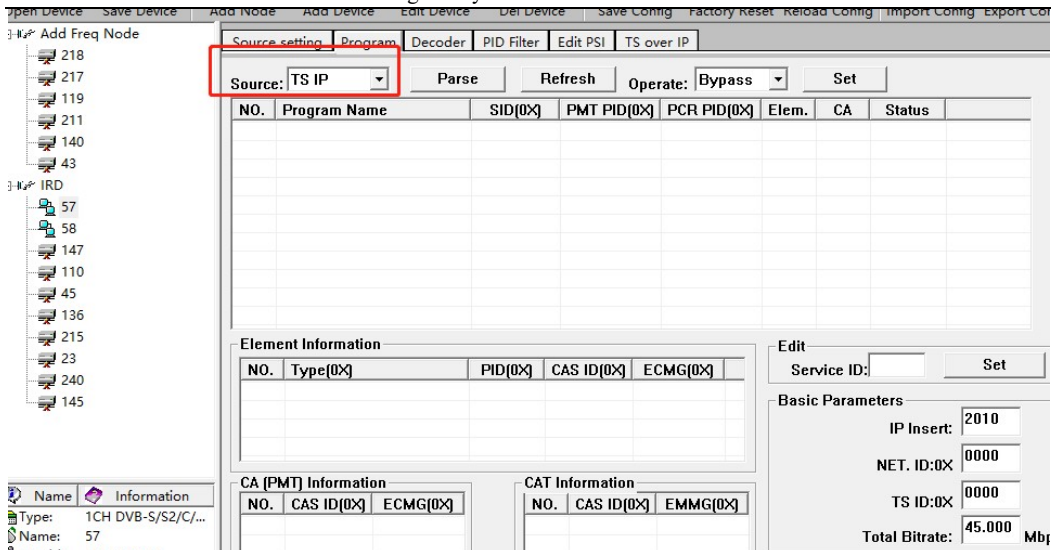
“ASI Lock” is green after select “DVB-ASI” and connect ASI signal



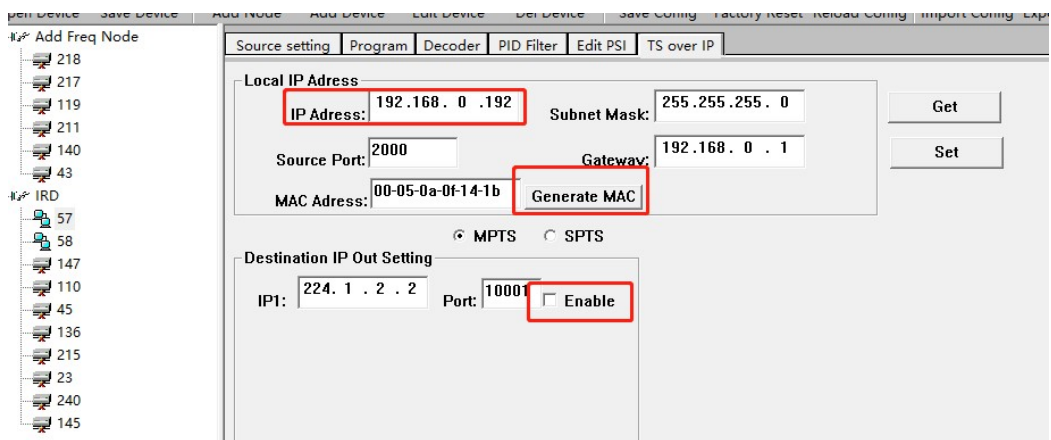
Set a local ip address”192.168.0.191” and output ip “192.168.0.192:10001”

3>set "ip to asi" decoder:

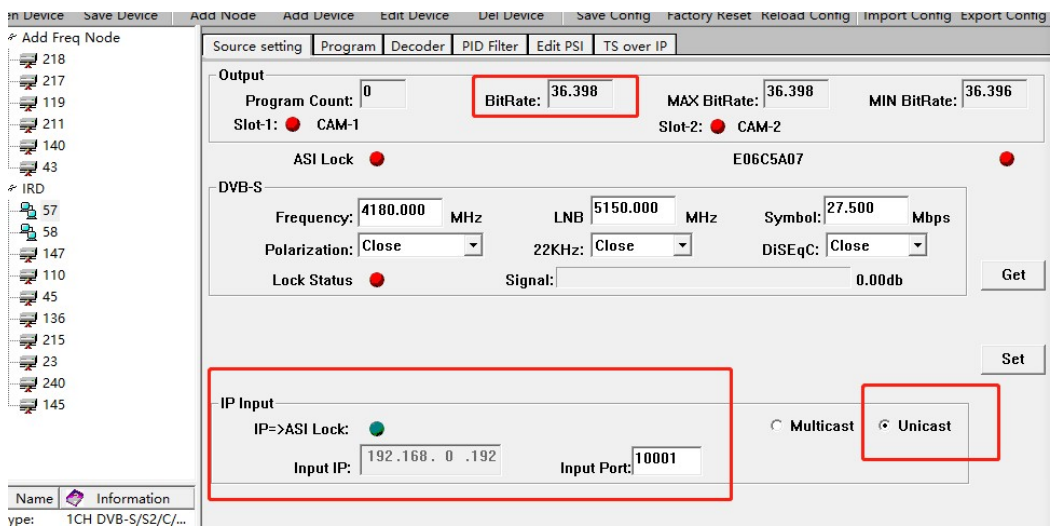
Thor H-ASI-IP-B ASI to IP and IP to ASI gateway



Select "TS IP" as input signal



Set a local ip address"192.168.0.192" and close ip output



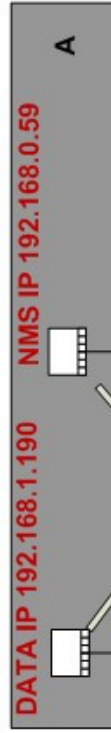
select "Unicast" and Set IP Input port "10001" "IP=>ASI Lock" is green

Thor Fiber H-1ASI-IP-B Bi-directional ASI to IP Converter A to B and B to A setup example

A ASI to IP

(NMS) NETWORK IP ADDRESS : **192.168.0.59**
 (DATA) LOCAL IP Address : **192.168.1.190**

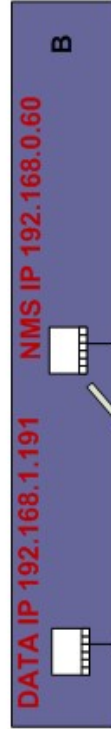
IP OUT Setting (to B)
 Destination IP - **192.168.0.191** Port **1001**



B IP TO ASI

(NMS) NETWORK IP ADDRESS : **192.168.0.60**
 (DATA) LOCAL IP Address **192.168.1.191**

IP OUT Setting (to A)
 Destination IP - **192.168.1.190** Port **1002**



The screenshots show the NMS configuration for Converter A and Converter B. Converter A is configured for ASI to IP conversion, and Converter B is configured for IP to ASI conversion. The configuration includes settings for Network IP Address, Local IP Address, and IP OUT Setting (Destination IP and Port).

Converter A Configuration:

- Local IP Address: 192.168.1.190
- IP Address: 192.168.0.59
- Destination IP Out Setting: 192.168.1.191
- IP: 192.168.1.191

Converter B Configuration:

- Local IP Address: 192.168.1.191
- IP Address: 192.168.0.60
- Destination IP Out Setting: 192.168.1.190
- IP: 192.168.1.191

