

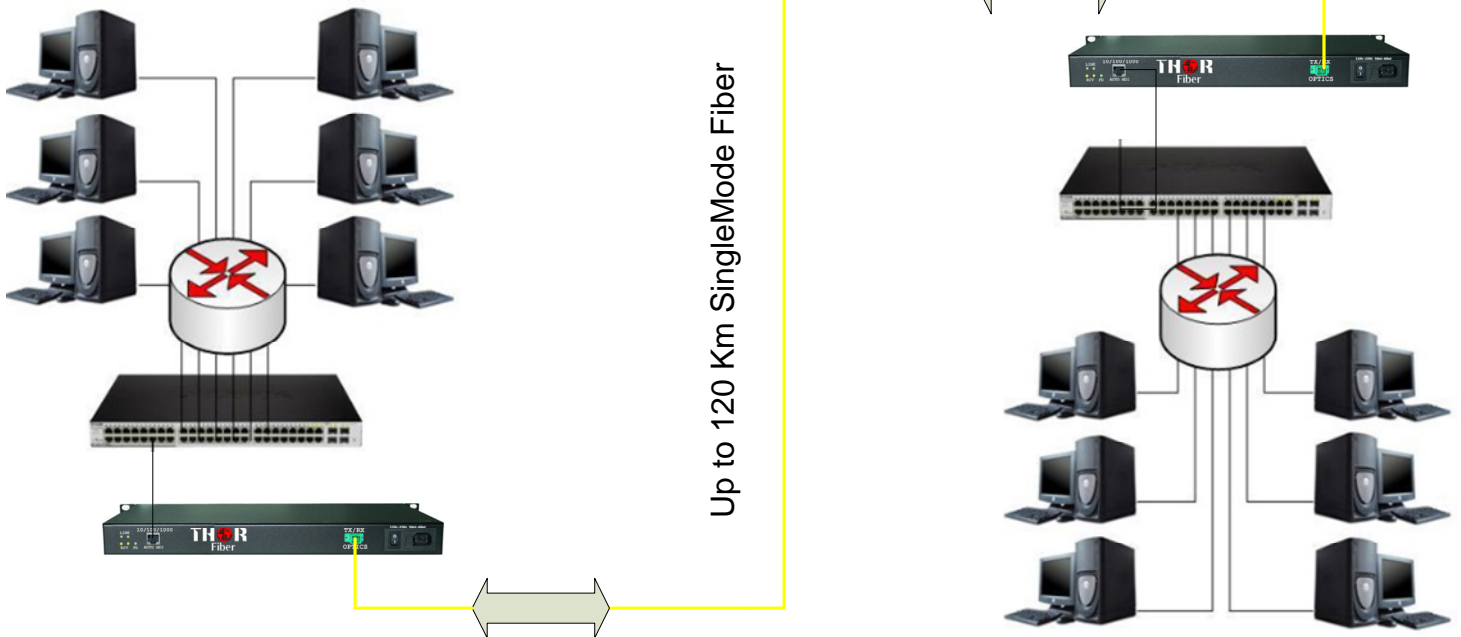
Data Sheet: F-LAN



The F-1G is used for transporting a Gigabit Ethernet port over a fiber from one location to another. The units work in pairs with a transceiver on each end of the fiber link. Any network cable connected to the RJ-45 port on one unit is transported to the corresponding RJ-45 port on the second unit. Our units work transparently, meaning they are non-IP addressable and any network traffic traveling through the fiber link remains unmodified. Any two devices that are connected over the fiber link appear to be directly connected by a standard network cable. This is useful for connecting switches or other network devices in different buildings or for extending an IP network to a far away location. We also offer custom equipment to incorporate more signals onto a single fiber. In addition to Ethernet you can also carry video and audio channels, telephone lines, E1 or T1 links, or even satellite signals all over a single fiber. Our units have a maximum transmission distance of 120 km when used with singlemode fiber. We feature easy to read diagnostic LED's for continuous monitoring of link status and network speed. Contact a sales representative for more information.



Typical F-LAN Application



Technical Specifications

Standards:	IEEE 802.3z 1000BASE-FX IEEE 802.3ab 1000BASE-T	Operating Temp:	0 – 50 (°C)
Connection Ports:	Fiber Ports SC/PC or SC/APC	Storage Temp:	-20 – 70 (°C)
Registration:	FCC Part 15 Class A, CE, UL, CUL, TUL	Operating Humidity:	0 – 90 (%)
LED Indicators:	GigE, Power, Link	Storage Humidity:	0 – 90 (%)
		Power Requirements:	110/240V Auto Sense
		Dimensions:	480mmX225mmX44mm